



Gigant Cottage, 100 Gigant Street, Salisbury, Wiltshire, SP1 2BQ

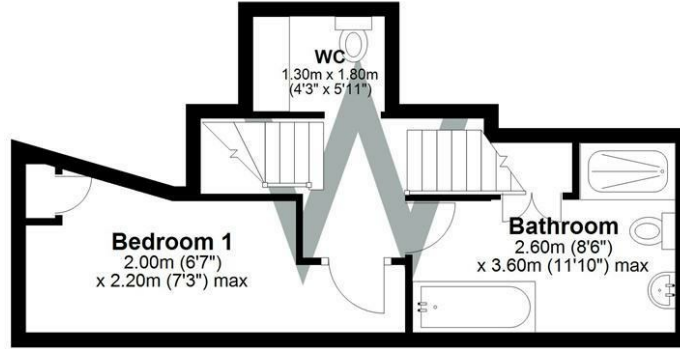
A newly redecorated 3-bed property, situated within the heart of the city centre. UNFURNISHED. Gas central heating.

- NEWLY REDECORATED
- CITY CENTER LOCATION
- 3-BEDROOMS
- AMPLE STORAGE
- SPACIOUS BATHROOM
- NEW BOILER
- EPC- D
- COUNCIL TAX BAND- C

£975 PCM

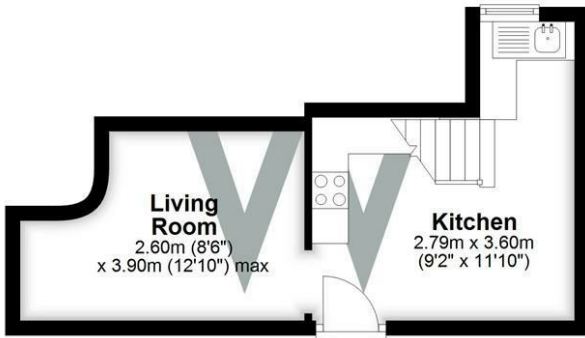
First Floor

Approx. 25.6 sq. metres (275.8 sq. feet)



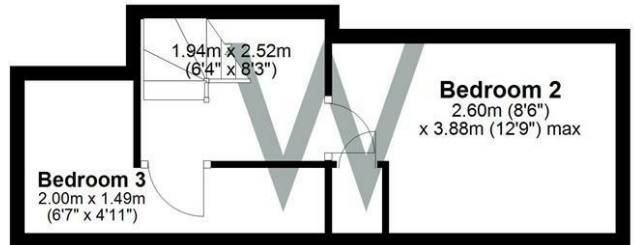
Ground Floor

Approx. 20.8 sq. metres (223.5 sq. feet)



Second Floor

Approx. 21.1 sq. metres (226.8 sq. feet)



Total area: approx. 67.5 sq. metres (726.1 sq. feet)

WHITES

Castle Chambers, 47 Castle Street, Salisbury,
Wiltshire, SP1 3SP

Tel: 01722 336422/Option 2

www.hwwhite.co.uk

email: lettings-management@hwwhites.co.uk

Energy Efficiency Rating	Current	Potential
Very energy efficient - lower running costs		
(92 plus) A		
(81-91) B		
(69-80) C		
(55-68) D		
(39-54) E		
(21-38) F		
(1-20) G		
Not energy efficient - higher running costs		
England & Wales		
	EU Directive 2002/91/EC	

Environmental Impact (CO ₂) Rating	Current	Potential
Very environmentally friendly - lower CO ₂ emissions		
(92 plus) A		
(81-91) B		
(69-80) C		
(55-68) D		
(39-54) E		
(21-38) F		
(1-20) G		
Not environmentally friendly - higher CO ₂ emissions		
England & Wales		
	EU Directive 2002/91/EC	